

## HAA - Boccole per tubi 2SW

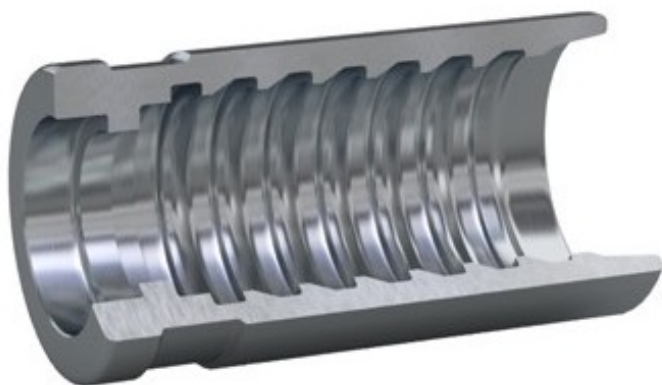

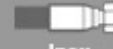




immagine puramente indicativa

 acciaio carbonio	 Inox AISI 316L	Descrizione	Quantitativo minimo per scatola	Dimensione tubo		C mm	D mm	L mm	acciaio al carbonio quantità	Inox quantità
				DN	Pollici					
	-	1/8 FERRULE HELIX 2SW	10 pcs	DN3	1/8"	12,6	8,4	33,5	161	N/D
	HAA801	5/32 FERRULE HELIX 2SW	10 pcs	DN4	5/32"	12,2	9,2	34,0	507	241
	HAA811	3/16 FERRULE HELIX 2SW	10 pcs	DN5	3/16"	14,0	10,6	40,0	1.092	104
	HAA821	1/4 FERRULE HELIX 2SW	10 pcs	DN6	1/4"	16,0	12,7	42,0	361	78
	-	5/16 FERRULE HELIX 2SW	10 pcs	DN8	5/16"	21,0	14,8	41,0	393	N/D
	-	3/8 FERRULE HELIX 2SW	10 pcs	DN10	3/8"	23,5	17,0	50,0	365	N/D
	-	1/2 FERRULE HELIX 2SW	10 pcs	DN12	1/2"	29,0	21,2	55,0	173	N/D

## HAB - Boccole per tubi 2+2SW



immagine puramente indicativa

 acciaio carbonio	 Inox AISI 316L	Descrizione	Quantitativo minimo per scatola	Dimensione tubo		C mm	D mm	L mm	acciaio al carbonio quantità	Inox quantità
				DN	Pollici					
HAB101	HAB801	5/32" FERRULE HELIX 2+2SW	10 pcs	DN4	5/32"	16,0	11,3	34,0	285	44
HAB121	HAB821	1/4" FERRULE HELIX 2+2SW	10 pcs	DN6	1/4"	19,5	14,2	42,0	970	97
HAB131	HAB831	5/16" FERRULE HELIX 2+2SW	10 pcs	DN8	5/16"	23,4	16,6	44,0	152	N/D
HAB141	HAB841	3/8" FERRULE HELIX 2+2SW	10 pcs	DN10	3/8"	25,7	19,5	50,0	8	32
HAB151	HAB851	1/2" FERRULE HELIX 2+2SW	10 pcs	DN12	1/2"	31,0	23,0	60,0	301	102
HAB171	HAB871	3/4" FERRULE HELIX 2+2SW	2 pcs	DN20	3/4"	40,5	31,2	69,0	91	45

## HAJ- Boccole per tubi 2SWX

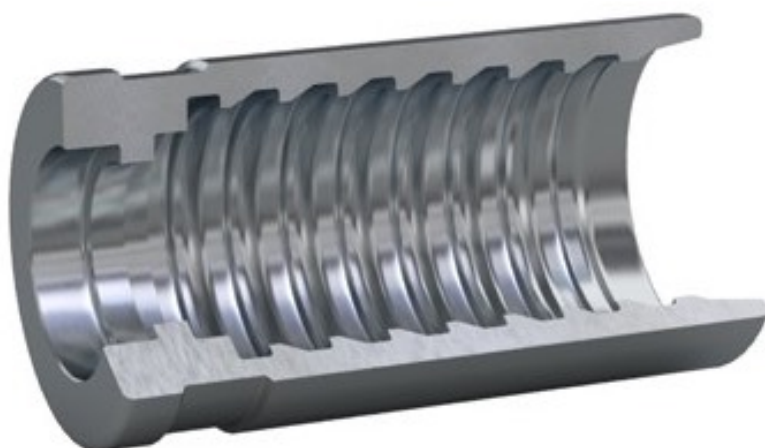




immagine puramente indicativa

 acciaio carbonio	 Inox AISI 316L	Descrizione	Quantitativo minimo per scatola	Dimensione tubo		C mm	D mm	L mm	acciaio al carbonio quantità	inox quantità
				DN	Pollici					
HAJ101	HAJ801	5/32 FERRULE HELIX 2SWH	10 pcs	DN4	5/32"	12,2	8,8	34,0	243	49
HAJ111	HAJ811	3/16 FERRULE HELIX 2SWH	10 pcs	DN5	3/16"	13,8	10,2	40,0	421	37

## HAC - Boccole per tubi 4SW

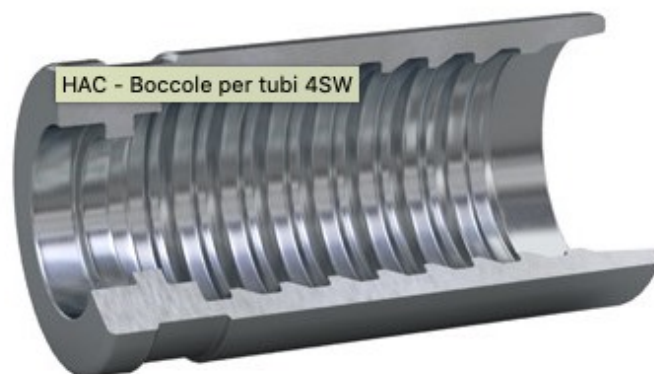




immagine puramente indicativa

 acciaio carbonio	 Inox AISI 316L	Descrizione	Quantitativo minimo per scatola	Dimensione tubo		C mm	D mm	L mm	acciaio al carbonio quantità	inox quantità
				DN	Pollici					
		5/32" FERRULE HELIX 4SW	10 pcs	DN4	5/32"	16,8	12,0	45,0	400	N/D
		3/16" FERRULE HELIX 4SW	10 pcs	DN5	3/16"	18,0	12,5	40,0	600	180
		1/4" FERRULE HELIX 4SW	10 pcs	DN6	1/4"	19,5	14,0	43,0	372	137
		5/16" FERRULE HELIX 4SW	10 pcs	DN8	5/16"	23,0	16,4	45,0	214	143
		3/8" FERRULE HELIX 4SW	10 pcs	DN10	3/8"	26,0	20,0	50,0	176	120
		1/2" FERRULE HELIX 4SW	10 pcs	DN12	1/2"	32,0	23,2	62,0	494	105
		3/4" FERRULE HELIX 4SW	4 pcs	DN20	3/4"	41,0	31,6	70,0	644	N/D
-		1" FERRULE HELIX 4SW	4 pcs	DN25	1"	49,3	39,8	75,0	-	160

## HAD - Boccole per tubi 4SWH



immagine puramente indicativa

 acciaio carbonio	 Inox AISI 316L	Descrizione	Quantitativo minimo per scatola	Dimensione tubo			C mm	D mm	L mm	acciaio al carbonio quantità	inox quantità
				DN	Pollici						
HAD111	HAD811	3/16" FERRULE HELIX 4SWH	10 pcs	DN5	3/16"	-	-	-	102	229	
HAD151	HAD851	1/2" FERRULE HELIX 4SWH	10 pcs	DN12	1/2"	33,0	24,5	62,0	102	229	

## HAG - Boccole per tubi 4+2SW

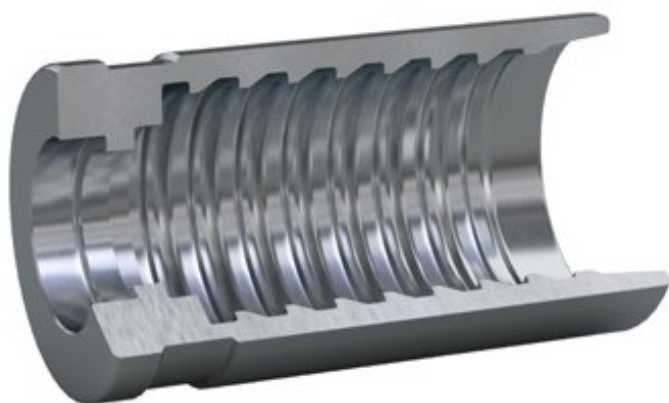


immagine puramente indicativa

 acciaio carbonio	 Inox AISI 316L	Descrizione	Quantitativo minimo per scatola	Dimensione tubo			C mm	D mm	L mm	acciaio al carbonio quantità	Inox quantità
				DN	Pollici						
HAG151	-	1/2" FERRULE HELIX 4+2SW	10 pcs	DN12	1/2"		25,0	33,7	62,0	N/D	-
HAG171	-	3/4" FERRULE HELIX 4+2SW	4 pcs	DN20	3/4"		45,0	34,0	71,5	173	-

## HAE - Boccole per tubi 6SW

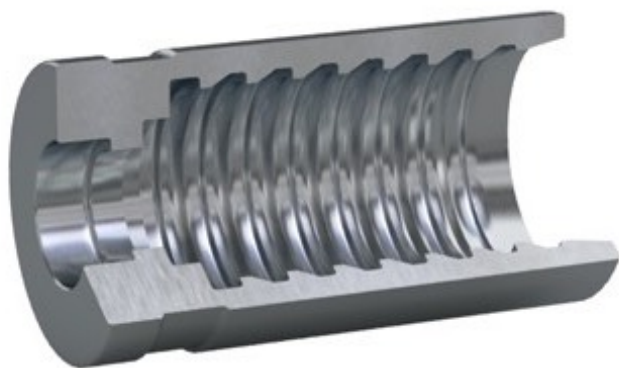


HAE - Boccole per tubi 6SW

immagine puramente indicativa



acciaio carbonio	Inox AISI 316L	Descrizione	Quantitativo minimo per scatola	Dimensione tubo		C mm	D mm	L mm	acciaio al carbonio quantità	Inox quantità
				DN	Pollici					
HAE101	-	5/32" FERRULE HELIX 6SW	10 pcs	DN4	5/32"	17,6	12,8	45,0	63	N/D
HAE111	HAE811	3/16" FERRULE HELIX 6SW	10 pcs	DN5	3/16"	22,5	15,0	63,5	449	174
HAE131	-	5/16" FERRULE HELIX 6SW	10 pcs	DN8	5/16"	26,4	18,4	63,5	240	52
HAE141	-	3/8" FERRULE HELIX 6SW	10 pcs	DN10	3/8"	31,2	22,5	52,0	153	N/D
HAE151	HAE851	1/2" FERRULE HELIX 6SW	10 pcs	DN12	1/2"	35,5	26,8	66,0	58	76
HAE171	-	3/4" FERRULE HELIX 6SW	4 pcs	DN20	3/4"	46,0	35,0	72,0	113	N/D
HAE181	-	1" FERRULE HELIX 6SW	4 pcs	DN25	1"	52,2	41,8	78,0	46	N/D

## HAF - Boccole per tubi 6SWH



HAF - Boccole per tubi 6SWH

immagine puramente indicativa

 acciaio carbonio	 Inox AISI 316L	Descrizione	Quantitativo minimo per scatola	Dimensione tubo		C mm	D mm	L mm	acciaio al carbonio quantità	inox quantità
				DN	Pollici					
	-	3/16" FERRULE HELIX 6SWH	10 pcs	DN5	3/16"	22,7	15,2	64,0	1.179	-
	-	1/4" FERRULE HELIX 6SWH	10 pcs	DN6	1/4"	24,4	17,2	64,0	179	-
	-	5/16" FERRULE HELIX 6SWH	10 pcs	DN8	5/16"	28,0	20,0	64,0	795	-
	-	5/16" FERRULE HELIX 6SWHDC	10 pcs	DN8	5/16"	28,0	20,0	70,0	26	-
	-	1/2" FERRULE HELIX 6SWH	10 pcs	DN12	1/2"	36,2	27,2	66,0	115	-
	-	3/4" FERRULE HELIX 6SWH	2 pcs	DN20	3/4"	46,0	34,6	72,0	43	-





